

# WAREHOUSE ROBOTICS



[mhsglobal.com](https://mhsglobal.com)

# ROBOTICS

## for the real world

Robotics are evolving faster than ever, with advanced vision, sensing and gripping technologies expanding the role of automation in key processes. This evolution comes at a time when manufacturing, parcel distribution and e-commerce fulfillment operations face growing labor challenges, with quality workers increasingly difficult – and expensive – to find and retain.

This intersection of technology advancements and labor shortages make warehouses prime candidates for robotics.

MHS offers the industry experience and technology expertise to translate the theoretical benefit of robotics into real-world value. From singulating products, transporting loads, picking individual items and more, MHS robotics can automate repetitive tasks and allow employees to be reassigned to higher-value roles, boosting worker engagement and reducing operating costs.

## RESEARCH + DEVELOPMENT

MHS has a 260,000-square-foot research and development facility dedicated to identifying the potential of emerging technologies to address market demands and developing them into viable material handling solutions. The R+D team develops products in-house, tests existing technologies from suppliers and collaborates on modifications for target applications like detachable carts, robotic arms, forklifts and conveyor supplements.

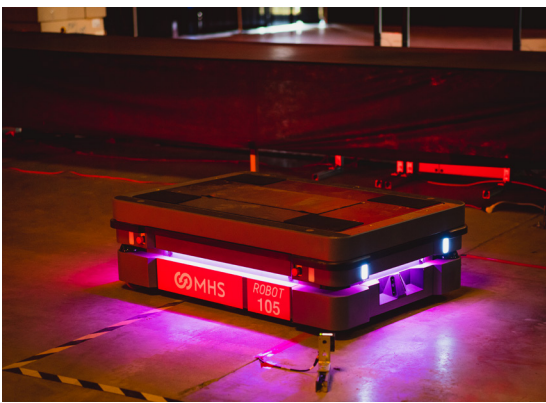




## PICK AND PLACE ROBOTICS

From picking orders to singulating parcels from bulk flow, the act of selecting, orienting and placing individual items is one of the most common and labor-intensive tasks in warehouses. And with escalating order volumes, demand is high for an automated solution. But no two operations are exactly alike. MHS has the industry expertise to match the right technology to the application, handling the product size, packaging mix and throughput requirements.

- Proprietary vision and intelligence systems to identify target pick and determine how to execute
- Variety of end effectors to consistently handle range of products
- Adaptable to work with adjacent automated equipment and processes

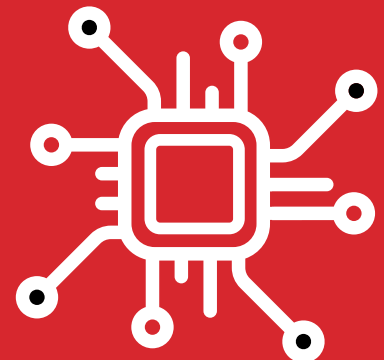


## MOBILE ROBOTS

MHS combines access to best-of-breed mobile robotic technologies with application design and integration expertise to offer the most efficient path to get maximum results from mobile robots. The full lineup of automated mobile transportation systems spans standard autonomous mobile robots (AMRs) and specialty concepts for target applications.

- Detachable cart concepts
- Robotic arm integrated on AMR
- Forklift-style AGVs
- Conveyor supplements integrated on AMR

**With robots increasingly prevalent, the challenge is properly integrating them to work as part of complex automated systems**

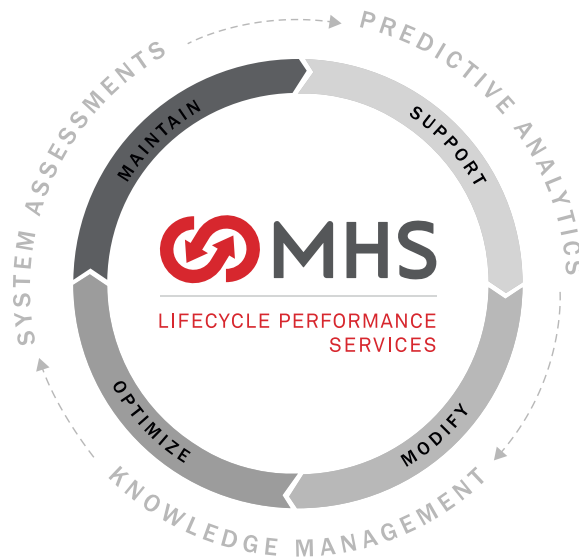


## MAINTAIN

- Inspections & recommendations
- Maintenance execution
- Peak readiness & support
- Reliability & asset management
- Parts storeroom management

## OPTIMIZE

- Production performance
- Operator effectiveness
- Control tuning
- Training



## SUPPORT

- 24/7 tech support
- Emergency response
- Remote monitoring
- Spare parts
- Documentation

## MODIFY

- Expansions
- Technology refresh
- Mechanical replacement
- Obsolescence remediation

## ABOUT MHS

Founded in 1999, MHS Global is a full-service provider of innovative material handling systems that solve the challenges of distribution and fulfillment operations. We take a comprehensive, customer-centric approach that includes custom engineering, design, manufacturing and turnkey integration services. Our quality solutions leverage a broad range of controls and automated equipment, including but not limited to sorters, conveyors, extendable loading and unloading systems. We provide complete, responsive support to maintain systems for peak performance, with predictive analytics and local technicians to maximize long-term value and return on investment.

MHS has a global installed base of over \$5 billion for small to large projects in a variety of industries, including e-commerce, distribution and fulfillment, parcel, third party logistics and outside integrators.



+1.502.636.0690  
info@mhsglobal.com  
mhsglobal.com